

PASSIQ

ADVANCED INTEGRATED PLATFORM

PassiQ, a highly advanced people counting solution, is part of the integrated solution, InsysIQ, provided by Robotina. The whole of PassiQ is developed based on 64-bit architecture to the core. Leveraging several key features and technologies, PassiQ provides the user with an all-round understanding of people in one's facility. The framework of PassiQ is based on .NET and consists of several stacked modules to create the entire PassiQ solution

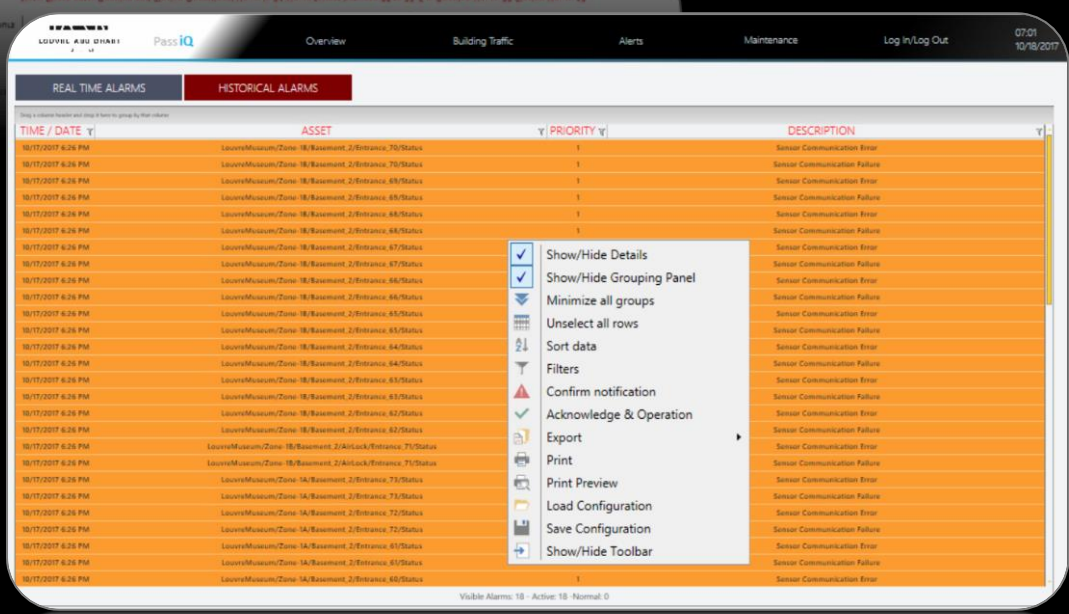
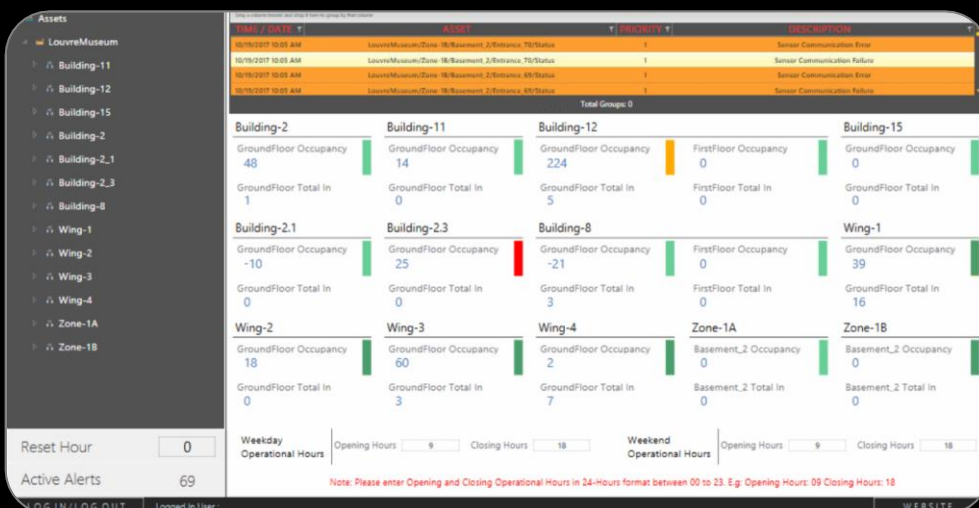
CORE DELIVERABLES



LOUVRE MUSEUM

FEATURES

- ✓ Real-time monitoring of Ins and Outs for Entrances and Zones
- ✓ Custom zones and sub-zones can be defined
- ✓ Real-time flow of people In and Out Entrances and Zones
- ✓ Live Occupancy within each zone
- ✓ Occupancy thresholds for each zone with alerts and notifications when occupancy is near and crosses the defined threshold
- ✓ Forecast to fill area for every zone on a weekday and weekend basis
- ✓ Real-time & Historical trends of flow and occupancy with advanced capabilities.
- ✓ Advanced reporting with the ability to get scheduled or on-demand reports for specific zones or entrances



KEY BENEFITS

- ✓ Effective promotions and marketing campaigns as footfall throughout facility is tracked
- ✓ Business decisions based on real information
- ✓ With real-time occupancy as well as the ability to forecast when specific areas will reach capacity, traffic flow can be restricted or diverted based on requirements
- ✓ Reduce operational costs by Optimization of staff shifts or scheduling
- ✓ Enhance Customer service while keeping low operating costs the entire facility and can drill down to the zone as well as the specific entrance
- ✓ Identify true traffic volumes and customer flow patterns
- ✓ Establish performance benchmarks between or within the property chain
- ✓ Festive season impact analysis
- ✓ Rental zones differentials

